

Connecting to IITDH-PC-Wireless -- Windows 10

Deleting existing profile:

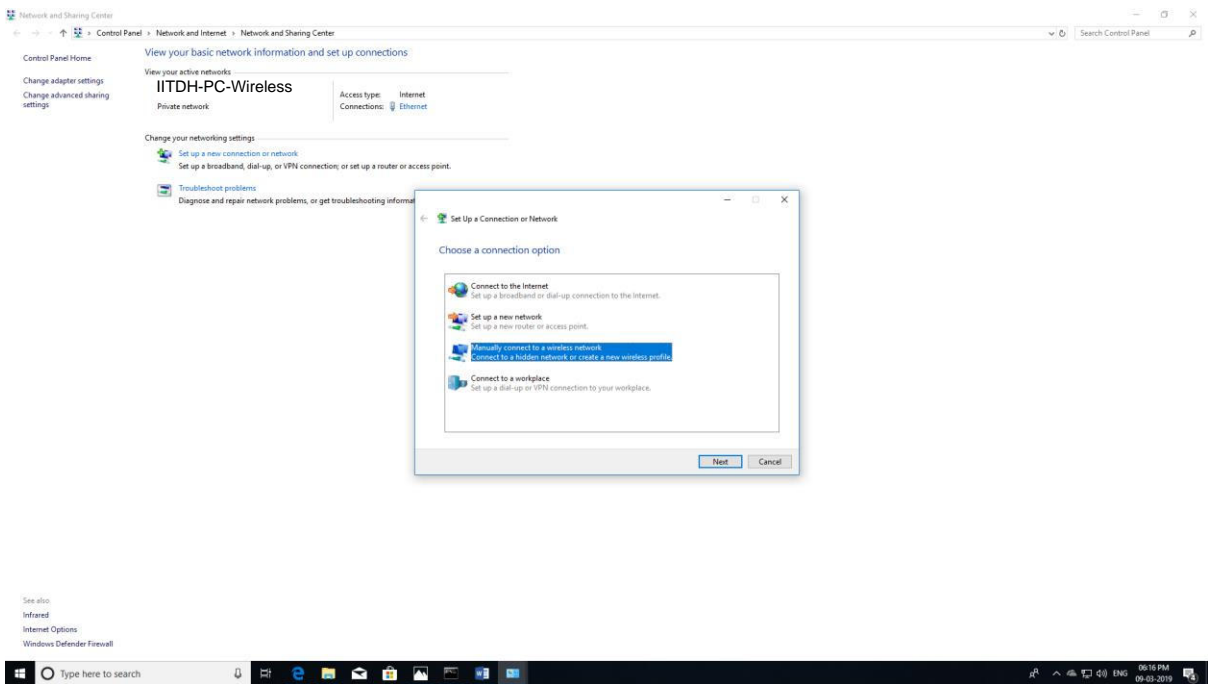
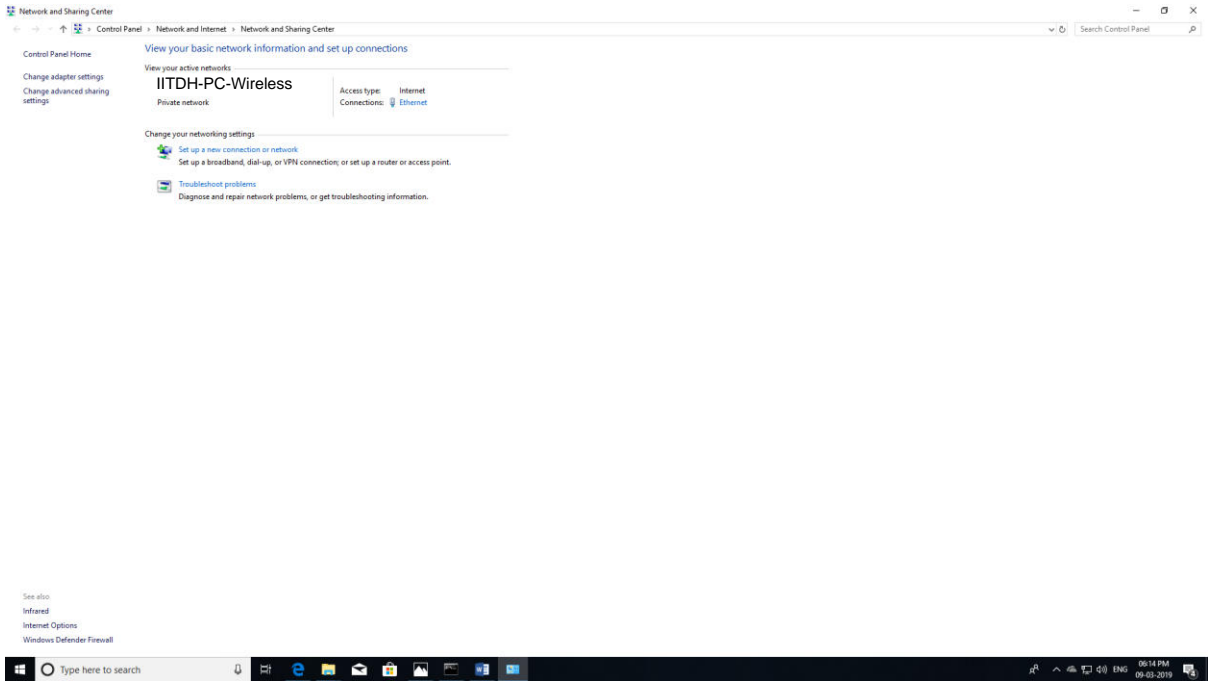
1. Search --> "Wi-Fi settings"
2. Select "Change Wi-Fi Settings"
3. Manage Wi-Fi settings --> Manage known networks
4. Select "IITDH-PC-Wireless" --> Forget

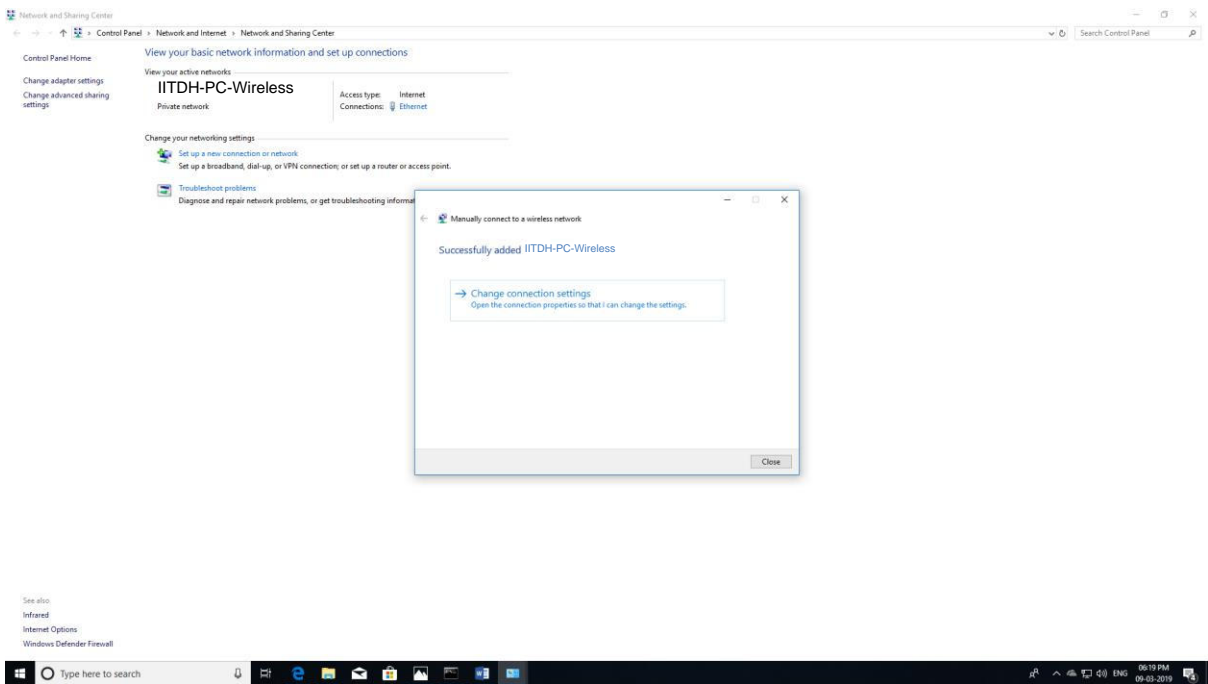
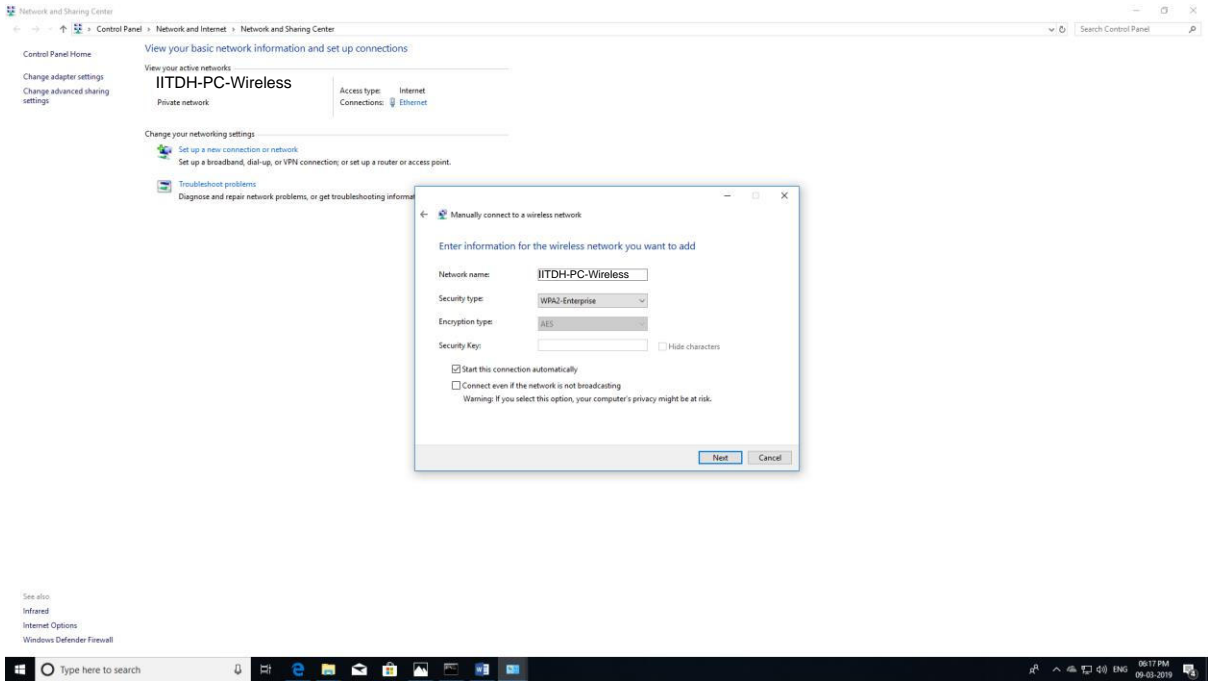
Manual Configuration of Profile

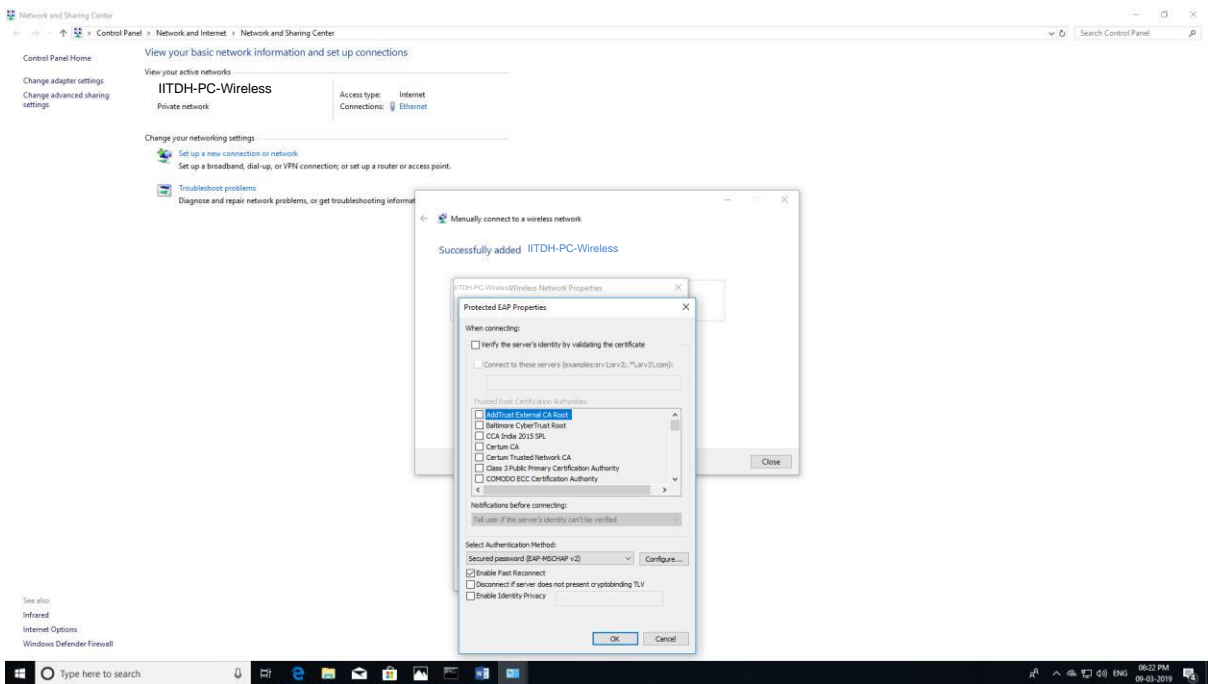
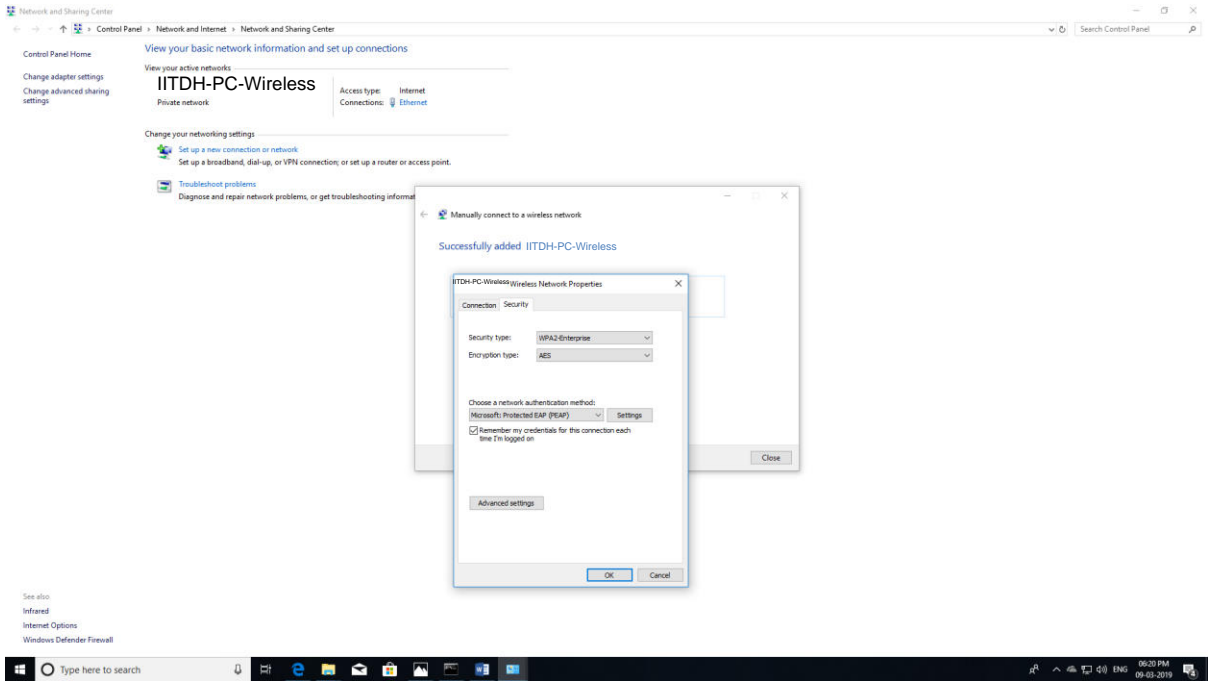
A set of instruction applicable to most operating systems is given below for doing the same

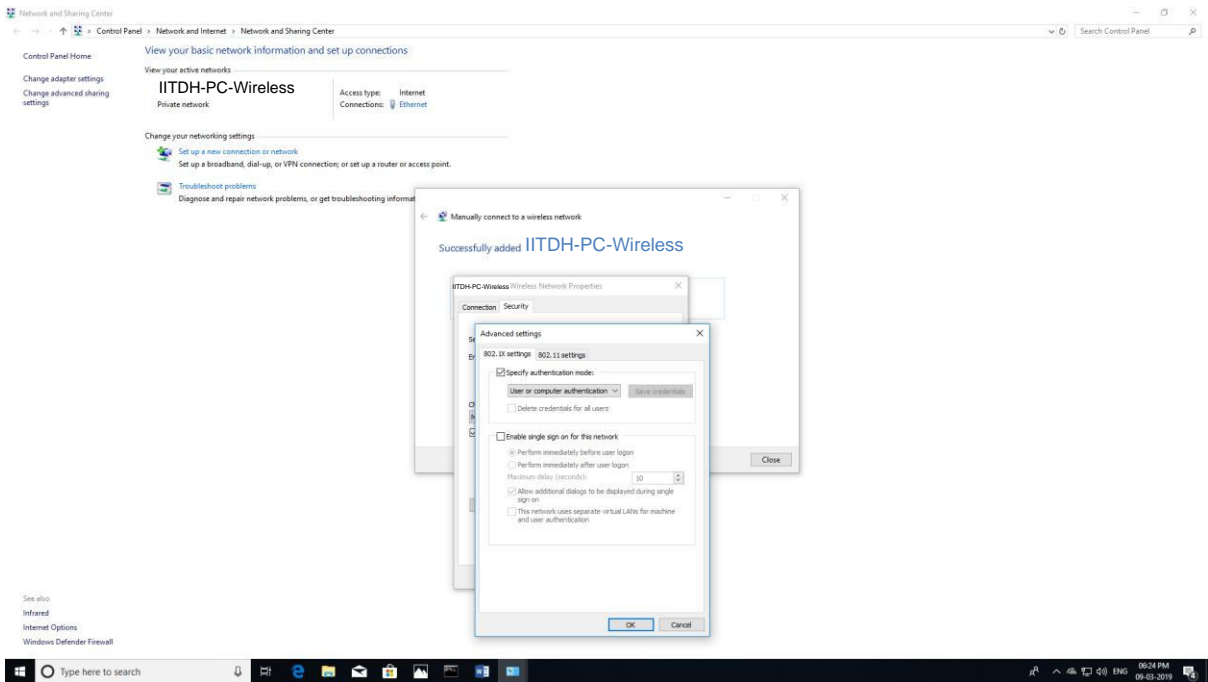
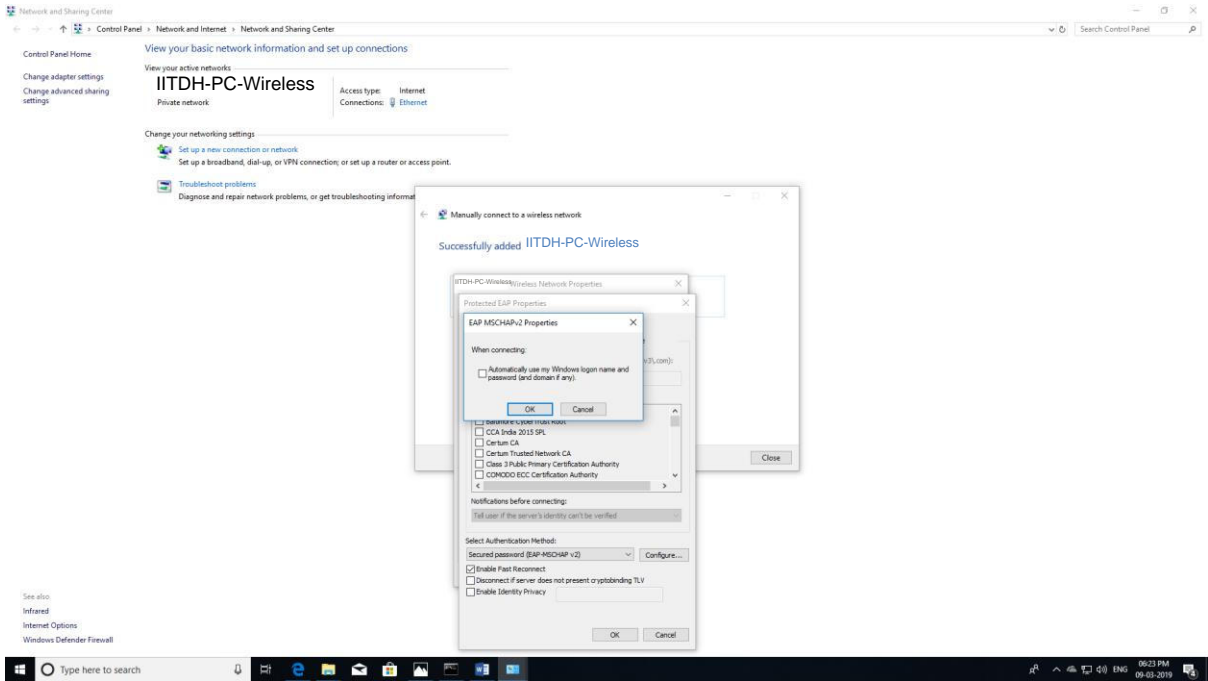
1. Open "Network and Sharing Center"
2. Select "Setup a new connection or network"
3. Select "Manually connect to a wireless network" and click next
4. Enter the details given below
5. Network name: "**IITDH-PC-Wireless**" (case sensitive)
6. Security type: "**WPA2-Enterprise**"
7. Encryption type: "**AES**"
8. Security key: keep this empty
9. Click "Next"
10. Select "Change connection settings"
11. Select "Security Tab"
12. Network Authentication method: Microsoft: Protected EAP (**PEAP**)
13. Click on the "Settings" tab besides the above option
14. Uncheck "Verify the server's identity by validating Certificate" check box
15. Click on "Configure" for PEAP-MSCHAP option
16. Uncheck the "automatically use my Windows logon name..." option if it is checked
17. Click on "Advanced Settings"
18. Select "Specify authentication mode"
19. Select "User or computer authentication"
20. Click "OK "
21. And we are done !
22. Select the SSID from wireless : "**IITDH-PC-Wireless**"
23. Login with your **LDAP credentials**.(without @iitdh.ac.in)
24. Now you can able to access internet

Note: Proxy settings are not required









Network and Sharing Center

Control Panel > Network and Internet > Network and Sharing Center

Control Panel Home

View your basic network information and set up connections

View your active networks

IITDH-PC-Wireless
Private network

Access type: Internet
Connections: Ethernet

Change your networking settings

Set up a new connection or network
Set up a broadband, dial-up, or VPN connection, or set up a router or access point.

Troubleshoot problems
Diagnose and repair network problems, or get troubleshooting information.

See also:
Infrared
Internet Options
Windows Defender Firewall

Windows Security Sign in

User name
Password

OK Cancel

IITDH-Wireless Connected

IITDH-PC-Wireless Secured
Checking network requirements
Cancel

IITDH-Wireless-1 Secured

HP-Print-e8-LaserJet Pro M202dw Open

Radius Test Secured

Network & Internet settings
Change settings, such as making a connection metered.

Wi-Fi Airplane mode Mobile Hotspot

16:27 PM 09-01-2019